



WESTSIDE
COMMUNITY SCHOOLS



LEO A DALY



PROJECT ADVOCATES
Your Project. Our Passion.

“OUR WORD MEANS SOMETHING

AT MECO-HENNE CONTRACTING INC., WE WILL ALWAYS ADHERE TO THE TRUTHFUL AND ETHICAL PRACTICES OF OUR INDUSTRY. OUR COMPANY WILL SUPPORT THE COMMUNITY AND ITS EMPLOYEES TO BECOME BETTER CITIZENS WHILE BEING A TRUSTED PARTNER IN ALL ITS ENDEAVORS.”

— JON HENNE SR., JON HENNE JR., AND JAKE HENNE

Design

Construction
Expectations

Student
Safety &
Logistics

Schedule

When you're passionate about the outcome, dedication comes naturally.

Project Design

Phase 2 Site Plan



Phase 2 Floor Plan



Northwest View



Southwest View



Southeast View



Northeast View



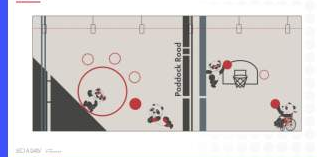
Classroom View



Gym View



Gym Mural



Phase 2 Site Plan

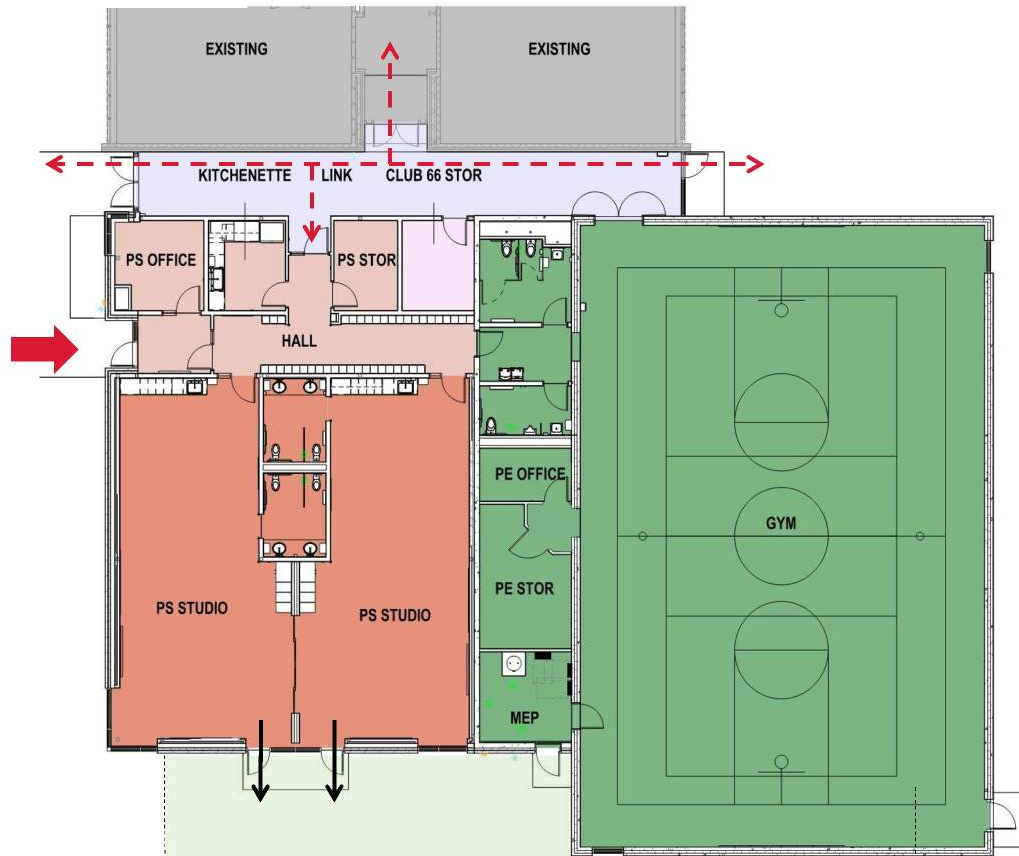
LEGEND

- 1 PHASE 2 BUILDING ADDITION
- 2 BASEBALL FIELD (EXISTING)
- 3 SOCCER FIELD
- 4 EARLY CHILDHOOD PLAYGROUND
- 5 HARD SURFACE PLAY AREA
- 6 NEW PARKING WITH 2-WAY DRIVE AISLE
- 7 RELOCATED DRIVEWAY - 2 ONE-WAY LANES
- 8 EXPANDED DROP-OFF/PICK-UP
- 9 PUBLIC SIDEWALK
- 10 STORMWATER BASIN



Phase 2 Floor Plan

- Link connector
- Dedicated, secure west EC entry
- Storm shelter
- Sliding door between classrooms
- Direct playground access from classrooms



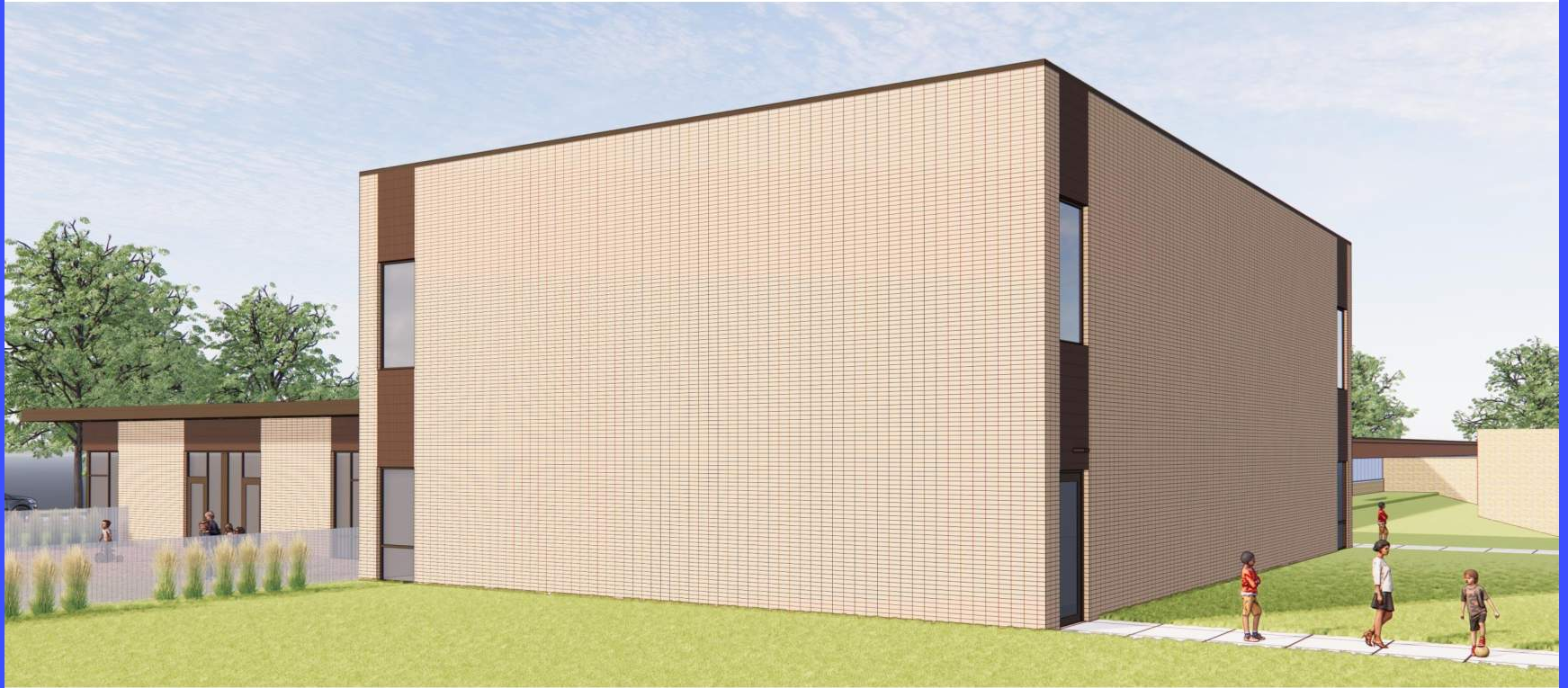
Northwest View



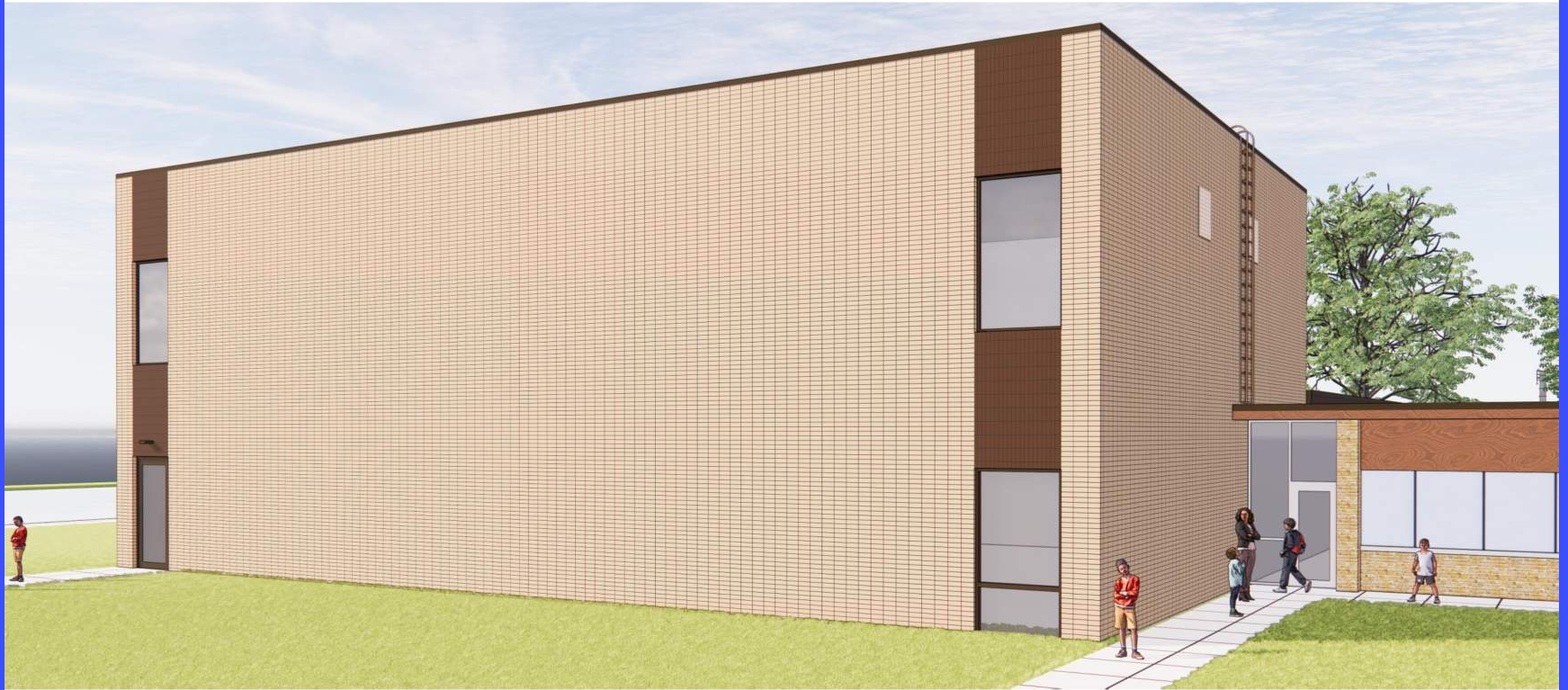
Southwest View



Southeast View



Northeast View



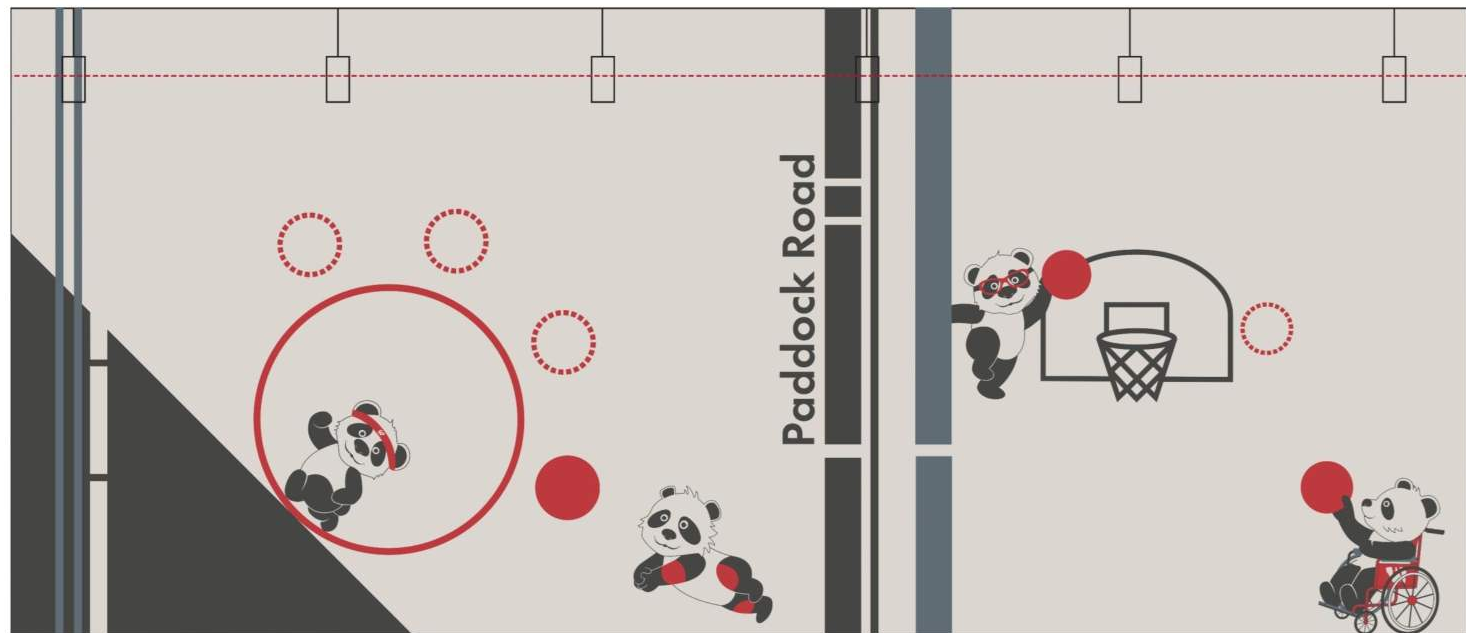
Classroom View



Gym View



Gym Mural





WESTSIDE
COMMUNITY SCHOOLS



LEO A DALY



PROJECT ADVOCATES
Your Project. Our Passion.

“OUR WORD MEANS SOMETHING

AT MECO-HENNE CONTRACTING INC., WE WILL ALWAYS ADHERE TO THE TRUTHFUL AND ETHICAL PRACTICES OF OUR INDUSTRY. OUR COMPANY WILL SUPPORT THE COMMUNITY AND ITS EMPLOYEES TO BECOME BETTER CITIZENS WHILE BEING A TRUSTED PARTNER IN ALL ITS ENDEAVORS.”

— JON HENNE SR., JON HENNE JR., AND JAKE HENNE

Design

Construction
Expectations

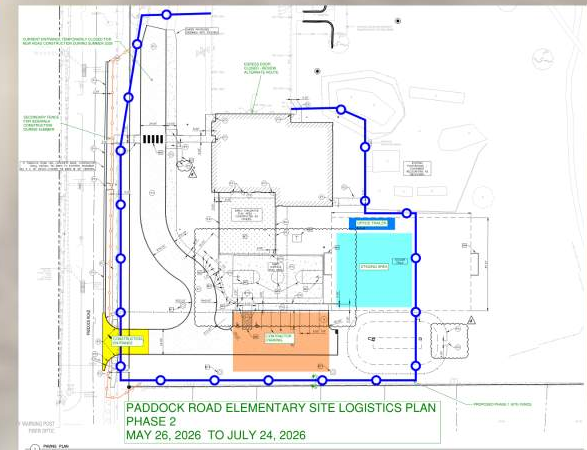
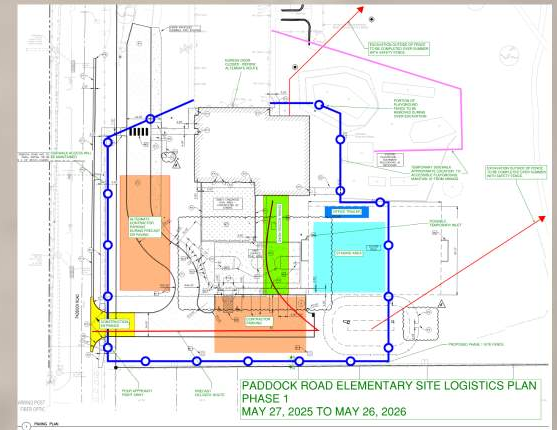
Student
Safety &
Logistics

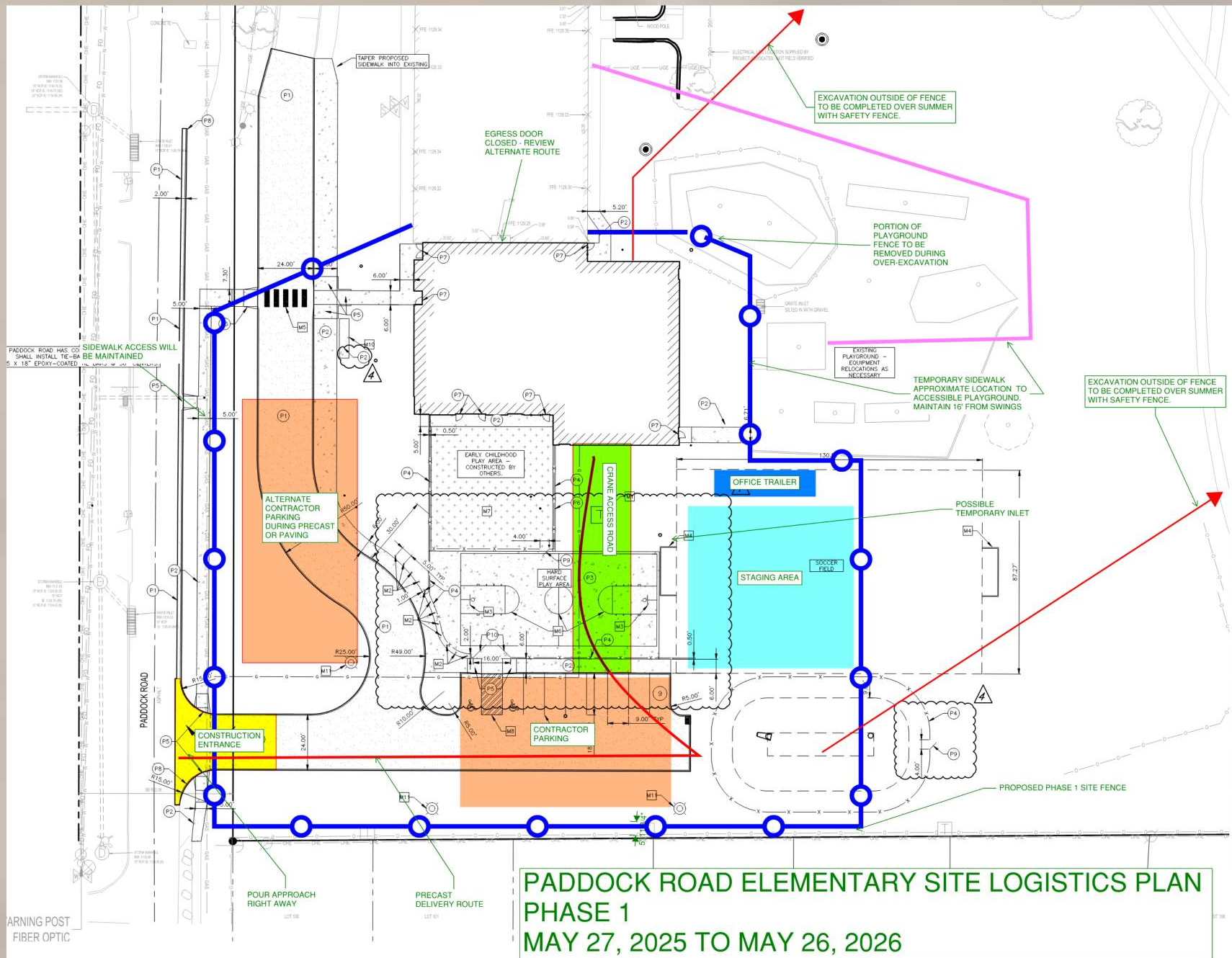
Schedule

When you're passionate about the outcome, dedication comes naturally.

Site Logistics & Safety Management

- **Student Drop-Off:** Will not change for 2025-2026 except the early childhood pick up & drop off to be at main entrance.
- **Safety Fence and Gate:** Install secure fencing and gates to protect students and staff during construction.
- **Traffic Control:** Deliveries will be coordinated with Meco-Henne.
- **Equipment Deliveries:** Schedule and manage deliveries of construction equipment to minimize disruptions.
- **Concrete Deliveries:** Coordinate concrete deliveries for optimal timing and site readiness.
- **Pre-Cast Deliveries:** Arrange pre-cast deliveries to align with drop off and pick up times.
- **Storm Water Management:** Implement effective storm water management strategies to prevent runoff and flooding.
- **Dust Control:** Utilize dust control measures to maintain air quality and minimize disturbances to the school environment.
- **Pool Coordination**
 - **We will have safety flaggers on Paddock Road during precast and other deliveries**





**PADDOCK ROAD ELEMENTARY SITE LOGISTICS PLAN
PHASE 1
MAY 27, 2025 TO MAY 26, 2026**

CURRENT ENTRANCE TEMPORARILY CLOSED FOR
NEW ROAD CONSTRUCTION DURING SUMMER 2026

SECONDARY FENCE
FOR SIDEWALK
CONSTRUCTION DURING SUMMER

IF PADDOCK ROAD HAS CONCRETE BASE, CONTRACTOR
SHALL INSTALL TIE-BARS TO EXISTING PAVEMENT
NO 5 X 18" EPOXY-COATED TIE-BARS @ 36" CENTERS

EGRESS DOOR
CLOSED - REVIEW
ALTERNATE ROUTE

OFFICE TRAILER

STAGING AREA

SOCCER FIELD

CONSTRUCTION
ENTRANCE

CONTRACTOR
PARKING

PADDOCK ROAD ELEMENTARY SITE LOGISTICS PLAN PHASE 2 MAY 26, 2026 TO JULY 24, 2026

PROPOSED PHASE 1 SITE FENCE

WARNING POST
FIBER OPTIC



WESTSIDE
COMMUNITY SCHOOLS



LEO A DALY



PROJECT ADVOCATES
Your Project. Our Passion.

“OUR WORD MEANS SOMETHING

AT MECO-HENNE CONTRACTING INC., WE WILL ALWAYS ADHERE TO THE TRUTHFUL AND ETHICAL PRACTICES OF OUR INDUSTRY. OUR COMPANY WILL SUPPORT THE COMMUNITY AND ITS EMPLOYEES TO BECOME BETTER CITIZENS WHILE BEING A TRUSTED PARTNER IN ALL ITS ENDEAVORS.”

— JON HENNE SR., JON HENNE JR., AND JAKE HENNE

Design

Construction
Expectations

Student
Safety &
Logistics

Schedule

When you're passionate about the outcome, dedication comes naturally.

Schedule - Milestone Dates

- Tree Removal is completed.
- May 27th, 2025
 - Project Start & Mobilization
- June & July 2025
 - Site Demolition & Grading
 - Site Utilities
 - Building Footings
- August 2025
 - Precast and steel erection
- September 2025 - May 2026
 - Building construction and interior finishes
- June 2026
 - New Drive lane and landscaping
- July 2026
 - Final punch list items & demobilization from site



WESTSIDE
COMMUNITY SCHOOLS



LEO A DALY



PROJECT ADVOCATES
Your Project. Our Passion.

“OUR WORD MEANS SOMETHING

AT MECO-HENNE CONTRACTING INC., WE WILL ALWAYS ADHERE TO THE TRUTHFUL AND ETHICAL PRACTICES OF OUR INDUSTRY. OUR COMPANY WILL SUPPORT THE COMMUNITY AND ITS EMPLOYEES TO BECOME BETTER CITIZENS WHILE BEING A TRUSTED PARTNER IN ALL ITS ENDEAVORS.”

— JON HENNE SR., JON HENNE JR., AND JAKE HENNE

Design

Construction
Expectations

Student
Safety &
Logistics

Schedule

When you're passionate about the outcome, dedication comes naturally.

3

Construction Expectations

- Daily Working Hours
 - 7:00 AM - 5:00 pm
 - Late working hours possible, minimal noise
- Construction Material Deliveries
 - Deliveries Daily
 - Coordinated with Meco-Henne
 - We will be on-site for this and will resolve issues asap
 - Flaggers for deliveries on Paddock Rd
- Utility connection across Paddock Road
- Phone number for issues
 - **Beau Beachler (On-Site) 402-957-0944**
 - **Office: 402-339-8127**



WESTSIDE
COMMUNITY SCHOOLS



LEO A DALY



PROJECT ADVOCATES
Your Project. Our Passion.

“OUR WORD MEANS SOMETHING

AT MECO-HENNE CONTRACTING INC., WE WILL ALWAYS ADHERE TO THE TRUTHFUL AND ETHICAL PRACTICES OF OUR INDUSTRY. OUR COMPANY WILL SUPPORT THE COMMUNITY AND ITS EMPLOYEES TO BECOME BETTER CITIZENS WHILE BEING A TRUSTED PARTNER IN ALL ITS ENDEAVORS.”

— JON HENNE SR., JON HENNE JR., AND JAKE HENNE

Design

Construction
Expectations

Student
Safety &
Logistics

Schedule

When you're passionate about the outcome, dedication comes naturally.